



OHUDDLE
1:1
SCHOOL
BASED
MENTORS

GRO HUDDLE



GROHUDDLE

STUDENT MENTORS FOR ELEMENTARY YOUTH

High School Upperclassmen Mentoring Elementary Mentees

Expanding the Huddle & Reducing Stigma

EVERYONE DESERVES A SOMEONE

promoting "service to others" with youth

OHUDDLE SERVICES

Ensuring a spectrum of responsive service delivery

Youth GROUP

all invited

More



MENTORSHIP

school nominated

More



Service COORDINATION

connecting referrals

More

1. OHUDDLE YOUTH GROUP *Field Trips*

OHuddle Youth group meets regularly to provide students an opportunity to practice asset development in the community. OHuddle partners with local churches to showcase area youth group opportunities. Dinner and free admission to a local activity are provided on each night.

2. OHUDDLE 1:1 MENTORSHIP *Available to students nominated by the school*

OHuddle mentors are trained to support students with the "40 Developmental Assets," research-based practice to foster positive youth outcomes. Students; nominated by schools, meet with their mentor for 40 minutes weekly; but are also supported regularly by their Site Coordinators, who serve in their schools daily. Service Coordinator opportunities and progress monitoring ensure individualized programming for each student served.

3. SERVICE COORDINATION *Available to youth evidencing advanced need*

OHuddle meets student food, clothing, and health needs through community partnerships and provides Case Management in partnership with Encompass and various other Mental Health providers.

"I taught my brother to fish after you taught me."

MENTEES WERE GIFTED A FISHING
POLE AND TACKLE BOX AT A
RECENT OHUDDLE FIELD TRIP IN
PARTNERSHIP WITH THE ORRVILLE
POLICE DEPARTMENT

On average, 75% of
students with an OHuddle
mentor improve their
school attendance



OHUDDLE CIRCLE OF INFLUENCE

2024 Statistics

OHuddle relies on research-based strategy and longitudinal data to evolve our programming. We pride ourselves on individualizing our practice based upon district needs.



OHUDDLE IMPACT

STUDENTS

SERVED

714

served with
1:1
mentorship



1319 served since 2013

OHUDDLE HOURS



54

\$16,200
Value
Donated
Teacher
Giveaways



152

COMMUNITY
SERVICE
COORDINATION
MEETINGS

49%



Percent of students
who showed combined
academic, behavior,
and attendance
improvement following
10 weeks of
Mentorship (as rated
by school staff)

PERCENTAGE OF
TEACHERS WHO:

97%

BELIEVE OHUDDLE TO HAVE
POSITIVELY IMPACTED
BUILDING CULTURE

82%

BELIEVE OHUDDLE TO HAVE
DIRECTLY IMPACTED REDUCED
NEED FOR DISCIPLINE

100%



WOULD LIKE TO SEE OHUDDLE
SERVICE CONTINUE

COMMUNITY
PARTNERS

Winter 2024

127

426 *All Districts*

ACTIVE MENTORS

=
19

BUILDINGS SERVED

=

27,132

VOLUNTEER HOURS

=

\$1.3M

- taking into account in kind donation...

ESTIMATED VALUE



**SYMBIOTIC FEEDBACK LOOK FOR EARLY PREVENTION
FOR ELEMENTARY
AND SERVICE TO OTHERS FOR HIGH SCHOOL**



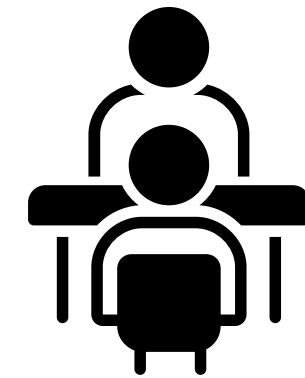


PLANNED PARTNERSHIPS

* Mental Health



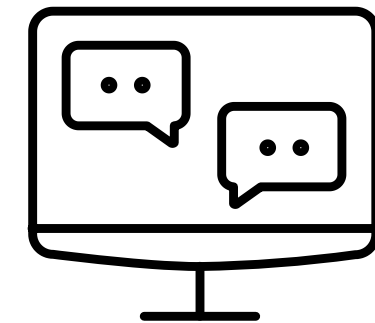
Warm handoffs for early mental health intervention



* Food Security



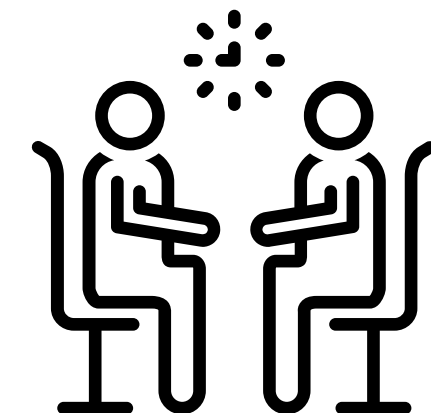
Access to food sent home and access supports



* Off Campus Wellness Skill Experiences



Service Coordination for youth camps, scholarships,
out of school programming



WHY?



**PROJECT
EVOLUTION**

- 1 DISTRICT REQUESTS FOR ELEMENTARY
- 2 MULTIPLY IMPACT WITH EARLY INTERVENTION
- 3 INCREASE ACCESS TO FAMILY WIDE RESOURCES
EARLY TRUST WITH FAMILIES
- 4 IMPROVE SCHOOL CULTURE AMIDST FUNDING
CUTS

PROOF OF CONCEPT

Constructive
Activities

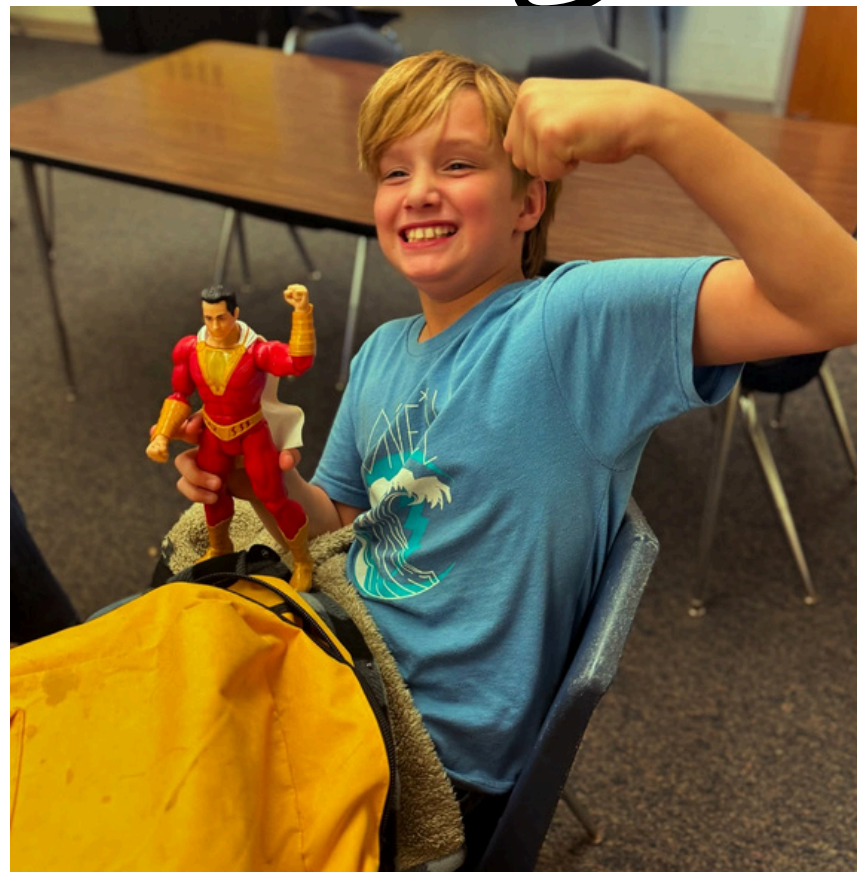


Field
Trips



Home Visits

...



...





GROHUDDLE

STUDENT MENTORS FOR ELEMENTARY YOUTH

High School Upperclassmen Mentoring Elementary Mentees

Expanding the Huddle & Reducing Stigma

EVERYONE DESERVES A SOMEONE

promoting "service to others" with youth